

グループ2 東海道筋の活性化

Group 2 – Revitalization

2020.02.16



コンセプト
Concept

メイカーズの道 “The Route of Makers”

where makers can live, work and thrive through manufacturing.

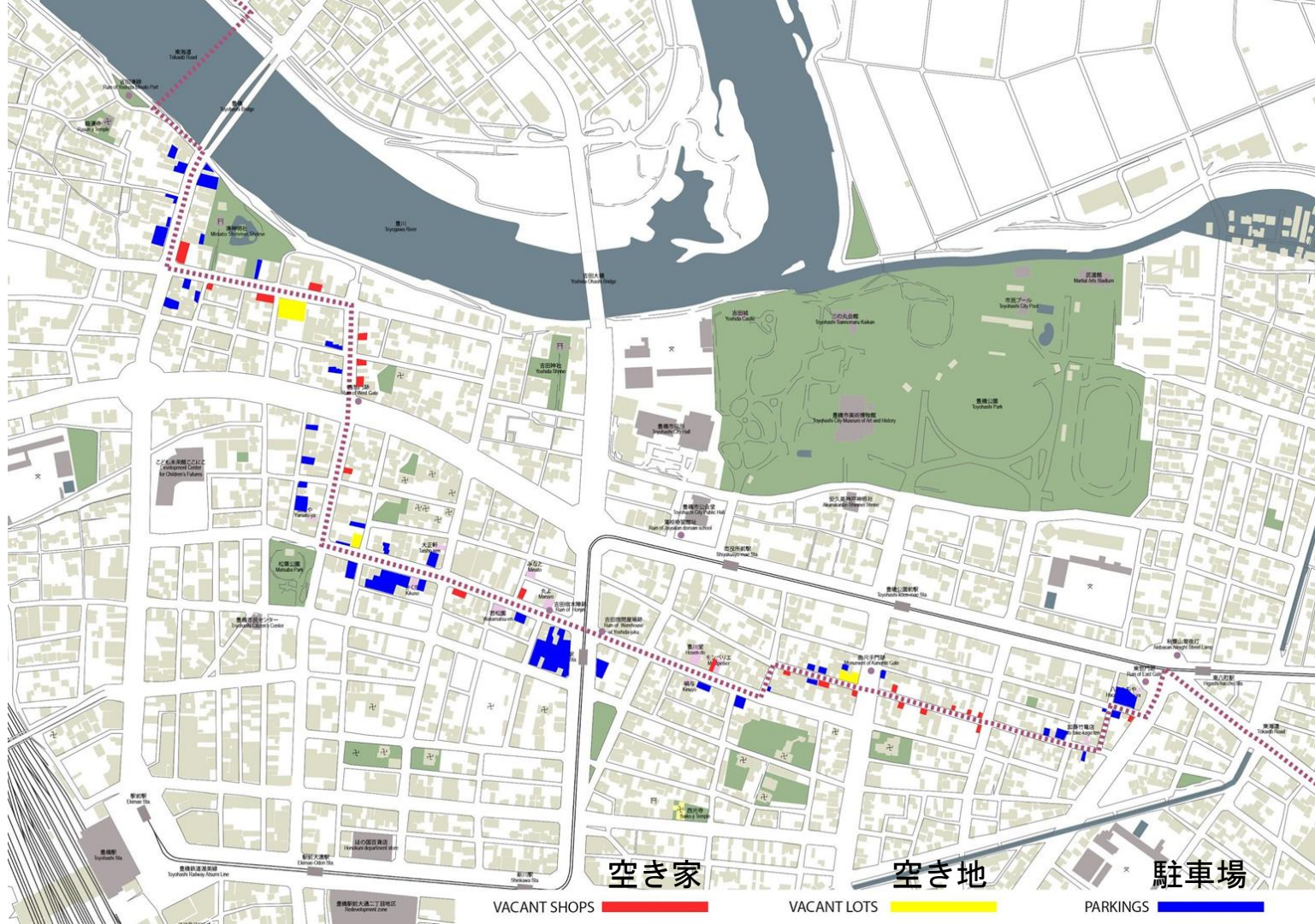
where makers can prototype, start new enterprises, promote their products and ideas.

- ・ 日本有数のメーカーが立地する東海道沿線
- ・ これまでのスタートアップは専らIT関係
- ・ 豊橋ではtangible（触れられる）なスタートアップを！
- ・ makerたちにとって未来への道を描く東海道

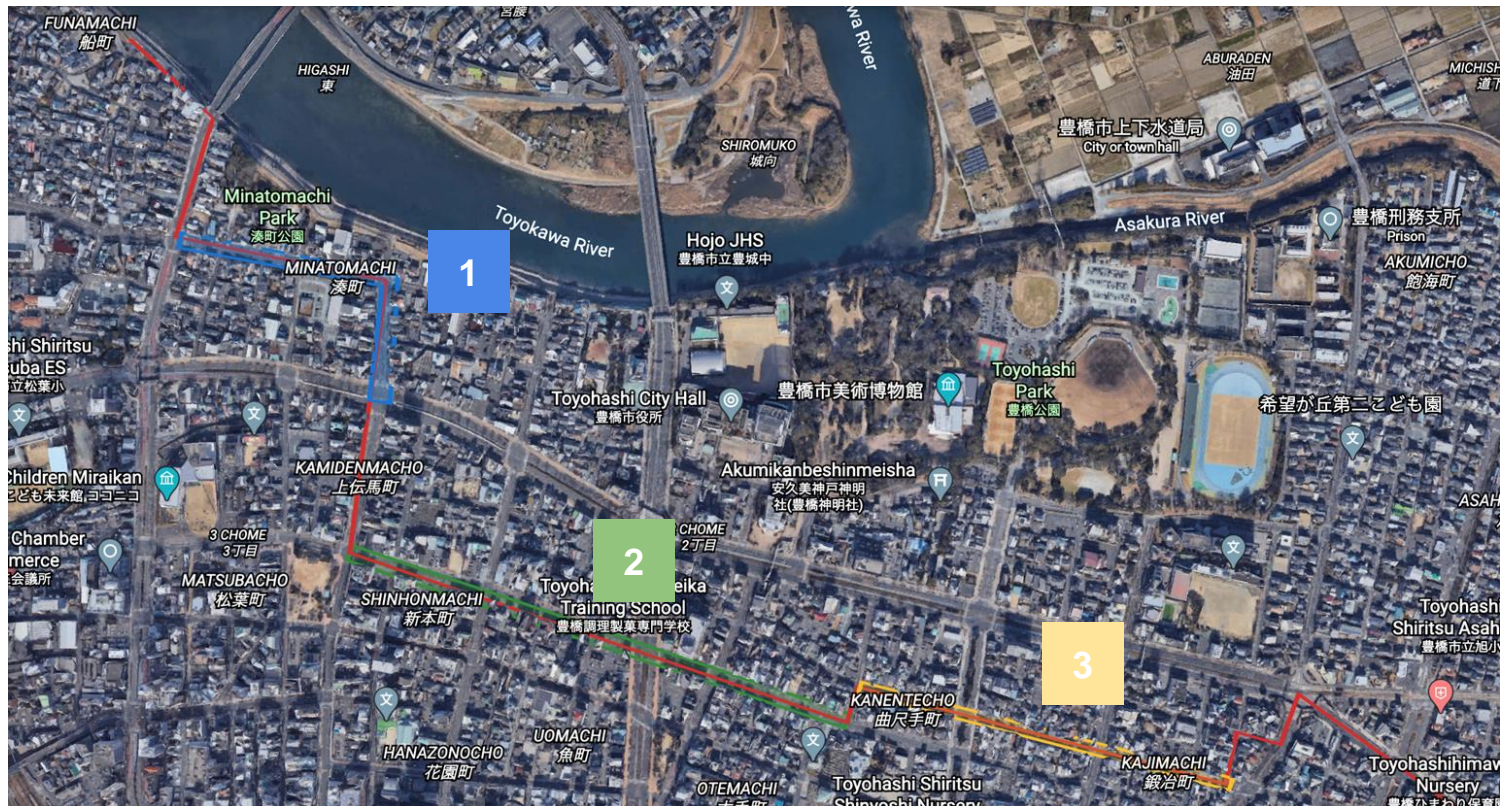


M A P

SITE POTENTIALS



提案 Proposals



提案 Proposals



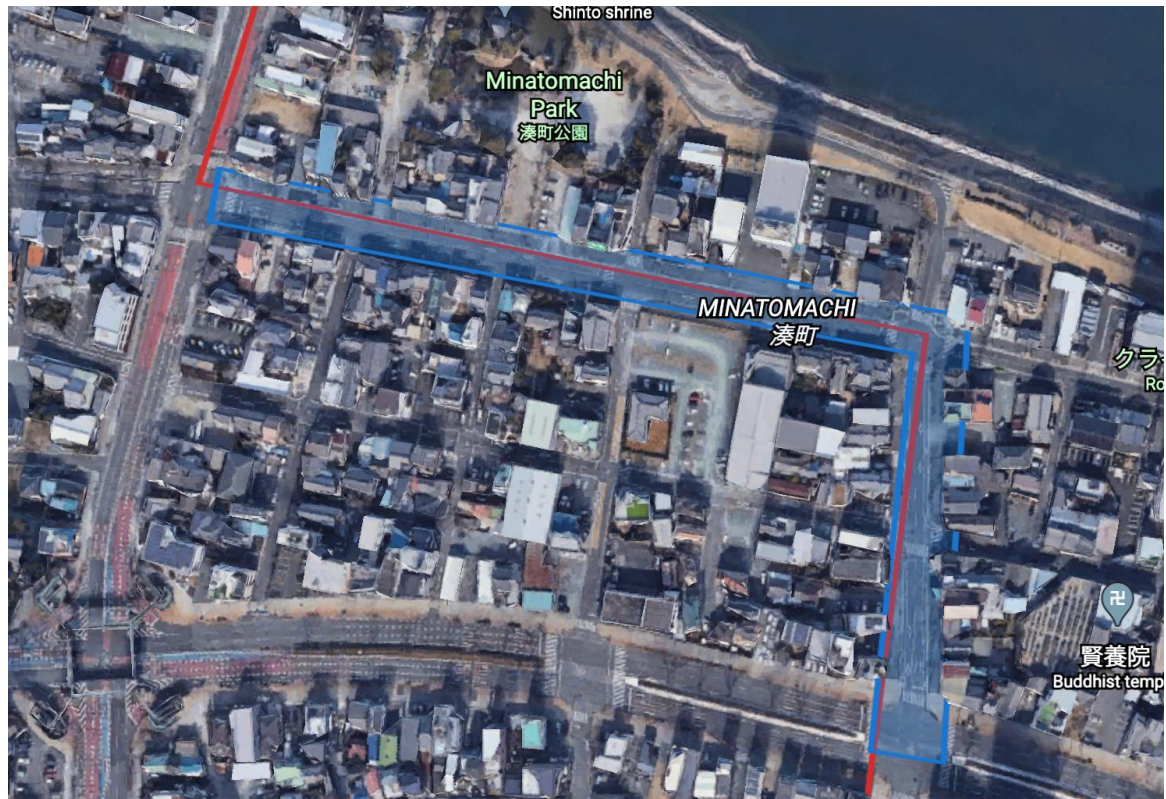
提案 1

Proposal 1

Makers facilities

Community
center

Dormitory



Google Earth



INDUSTRIAL ZONE (FABLAB & SOHO)





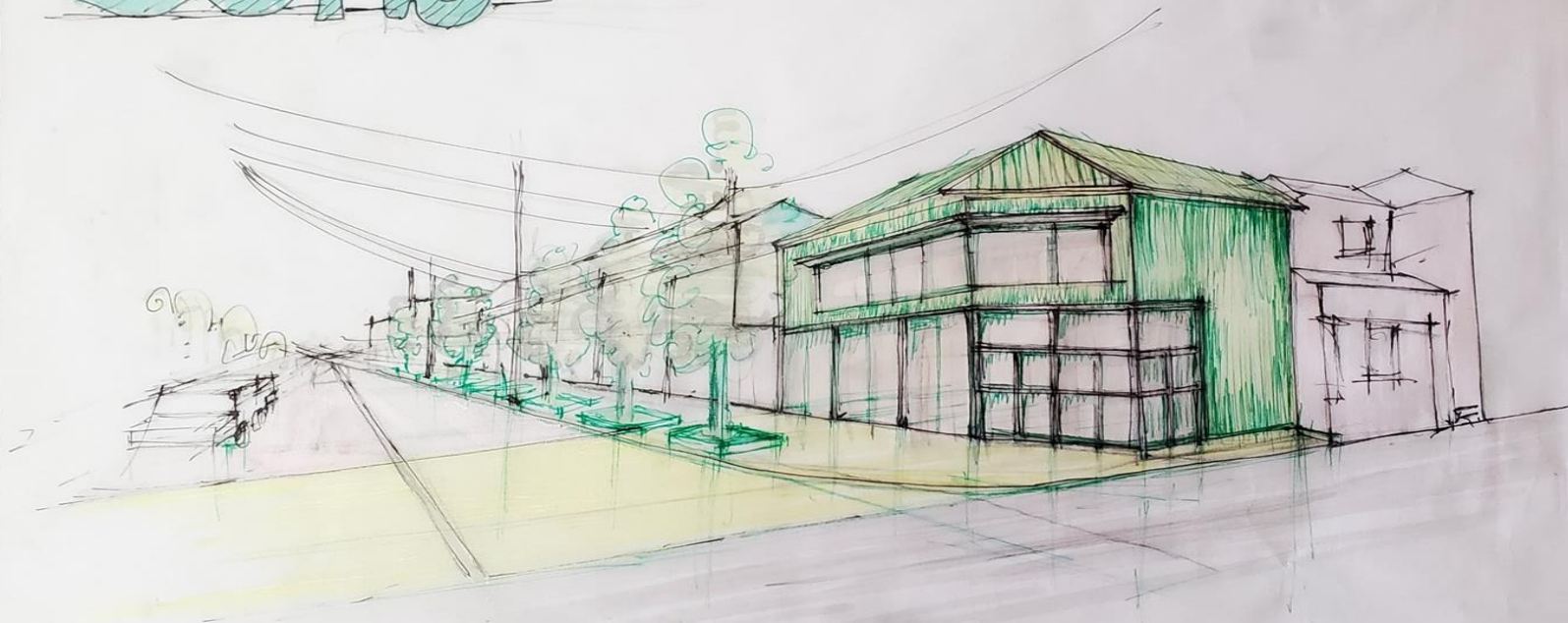
INDUSTRIAL ZONE (FABLAB & SOHO)



<http://www.innovateli.com/4353-2/>

INDUSTRIAL ZONE (FABLAB & SOHO)

SOHO

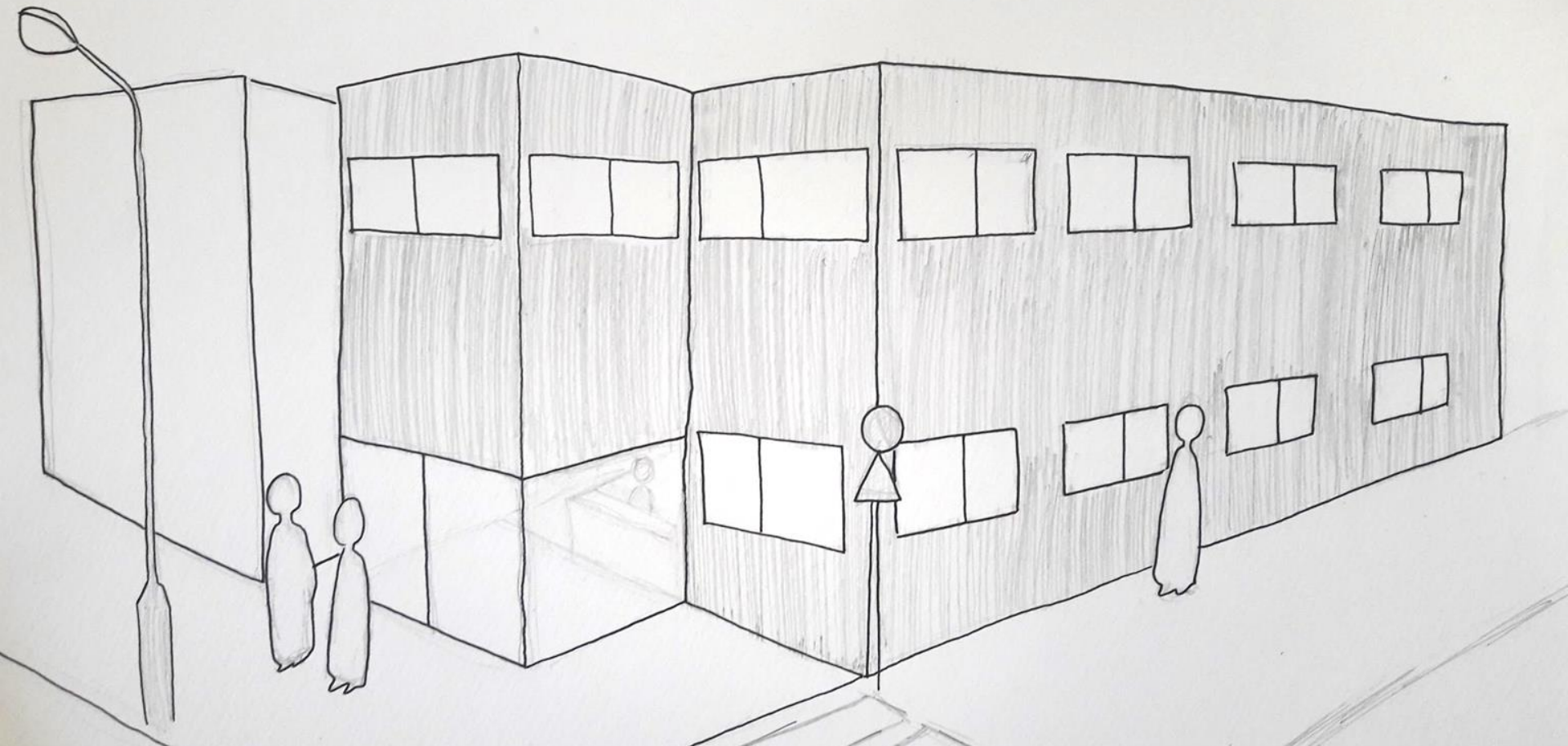


Machinaka Conference 20.02.16

AFTER!

INDUSTRIAL ZONE (DORMITORY)

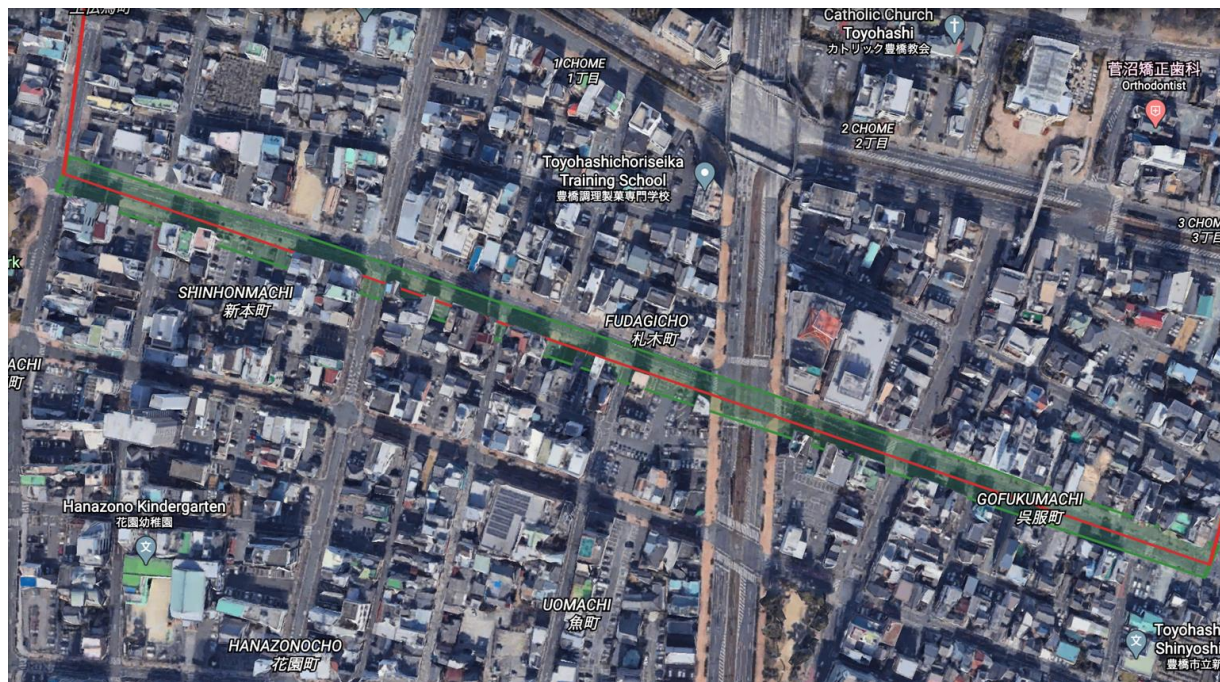




INDUSTRIAL ZONE (DORMITORY)

Proposal 2

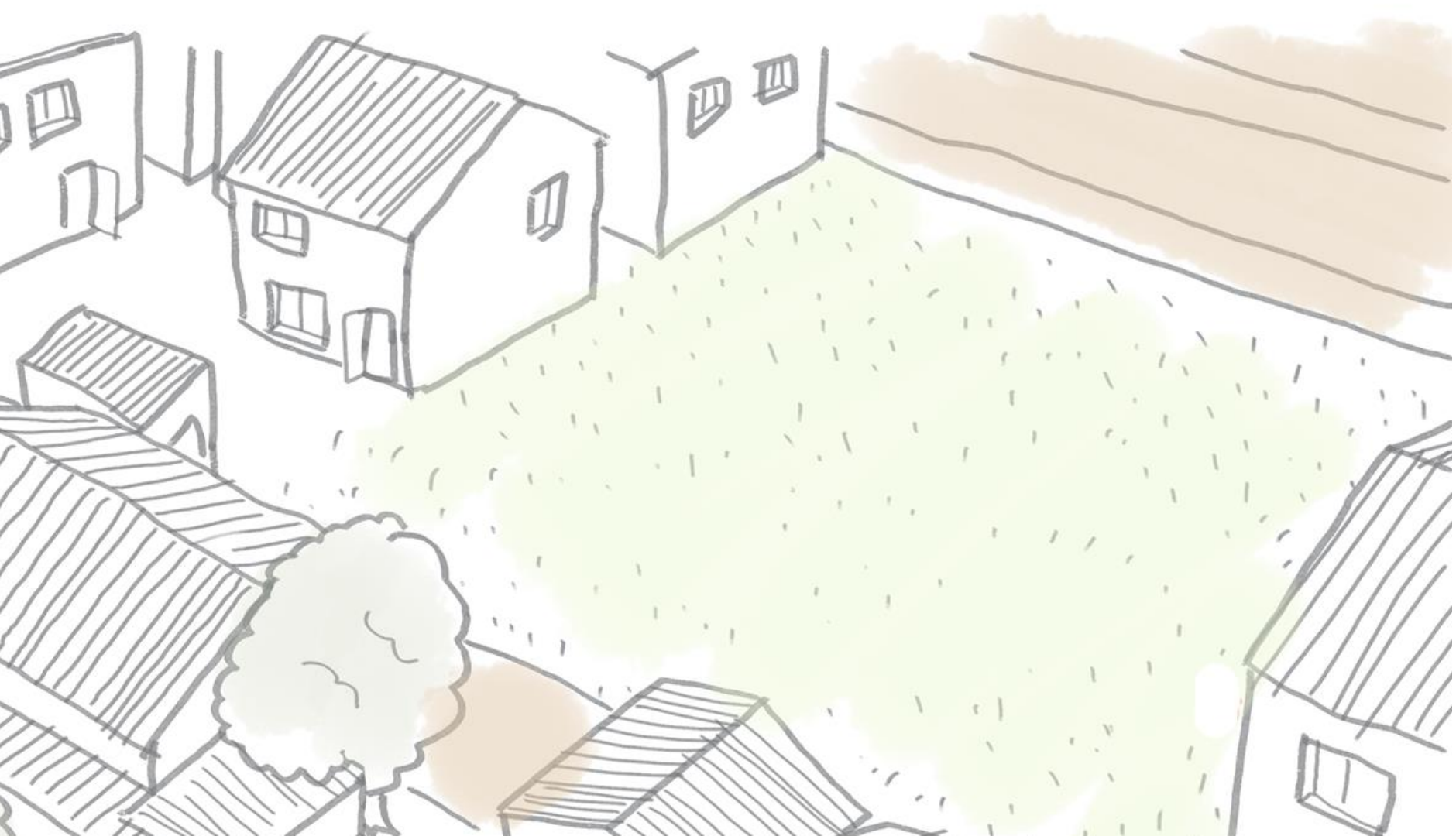
weekly open
market, monthly
showcase

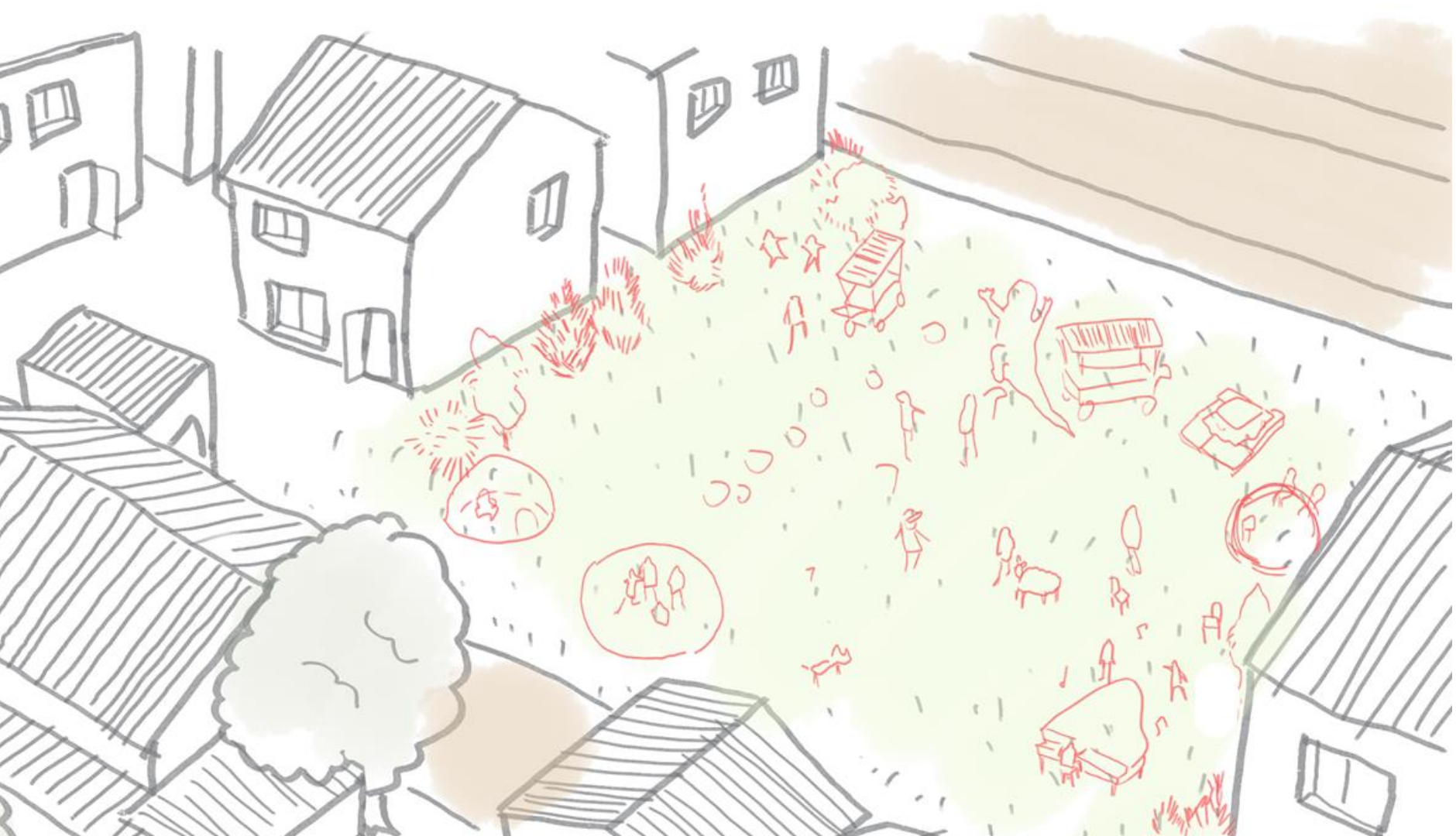


Google Earth

地元住民とのインタラクション！製品を企業担当者にプロモート！



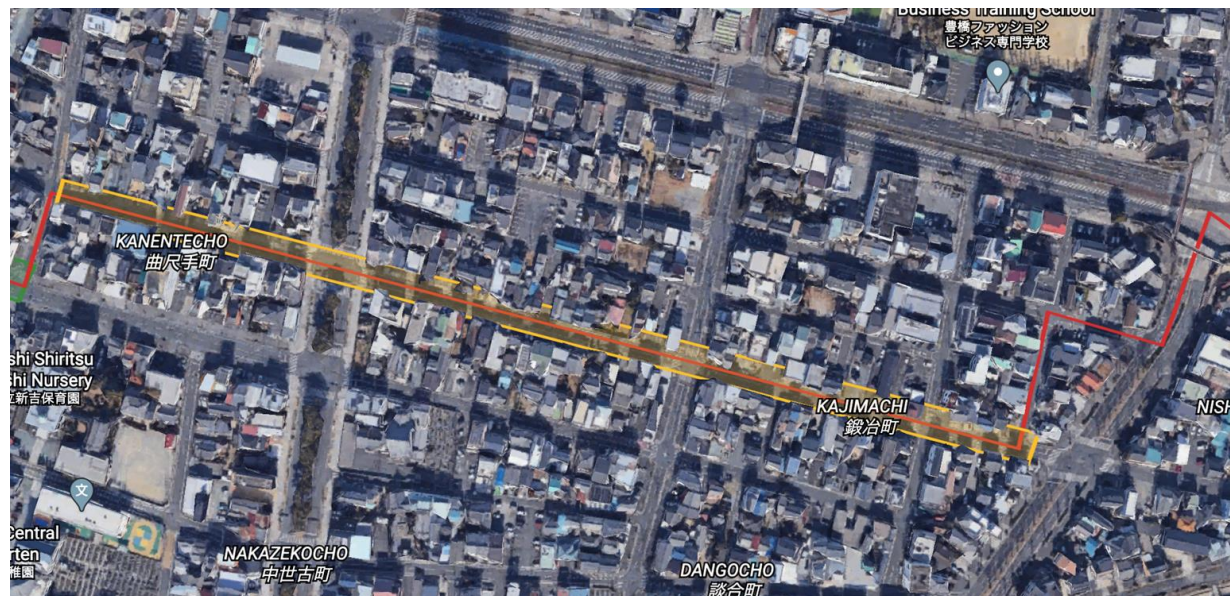






Proposal 3

residential area



Google Earth



Logo ideas

- Gear (industry, makers)
- Rice (agriculture)
- History?

